

*A Better Design...*

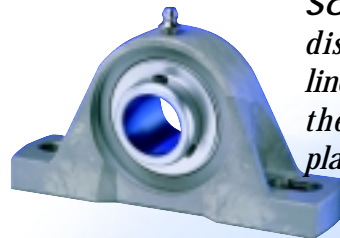
for

Healthy  
Peace  
of Mind.



**CRES**  
**Mounted Ball Bearings**

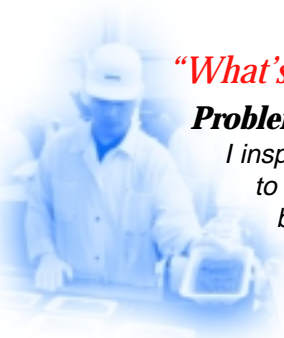
*Emerson  
Power  
Transmission  
is pleased to introduce  
C R E S -  
Corrosion  
Resistant  
Engineered  
Solutions. Seven  
distinctive product  
lines designed to meet  
the widest range of  
plant applications.*



[www.emerson-ept.com](http://www.emerson-ept.com)

EMERSON POWER TRANSMISSION

# We Offer Solutions...



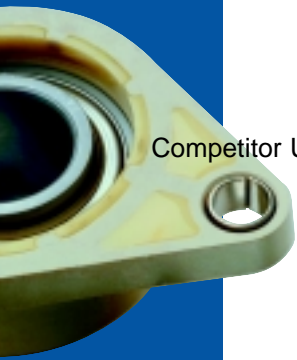
## *“What’s Growing Here?”*

**Problem:** “In my opinion surface finish is a major problem for bearings & other components I inspect. They continually fail swab and bio-luminescent bacteria detection tests due to excessively high surface porosity. A great example would be the stainless steel bearings used in the plant where I work”.

**Solution:** When we designed our CRES Bearings, we DID sweat the small stuff. Sealmaster® and Browning® stainless steel housings are designed to minimize excessive pitting and surface roughness. This feature results in fewer bacteria growth areas and in units that are easily cleaned and sanitized.



Competitor Unit      CRES Unit



Competitor Unit



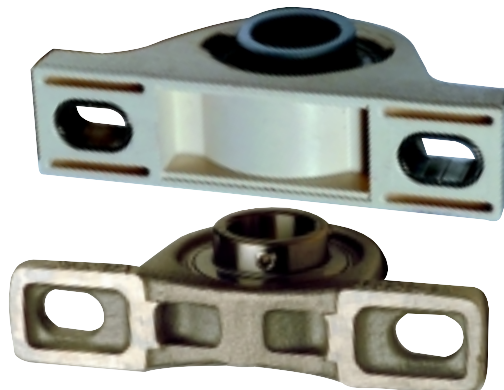
## *“Give Me Fewer Entrapments & Fewer Headaches.”*

**Problem:** “I use corrosion resistant bearings, but these hollow housing bases are driving me crazy! This composite bearing bolt hole ferrule is another perfect example of an entrapment point for bacterial growth. They’re difficult to clean, and as a result I am always concerned about receiving a FDA 483 Notice. This plant’s HACCP procedure calls attention to these problem areas but bearing vendors need to understand the requirements of the food processing marketplace. They need to design products that address these issues”.

**Solution:** Elimination of gaps and crevices was a top priority in product development. Both our stainless steel and composite housings are designed to eliminate typical entrapment points. All housings have a solid mounting surface (molded or machined without the need for a secondary filling process). Attention to detail resulted in products with the best features available, including bolt hole ferrules designed to minimize protrusions or gaps.



CRES Unit



Competitor Units



CRES Units

# ... To your Contamination & Failure Problems.



Competitor Units



## *"What Do I Re-Order?"*

**Problem:** "Today a maintenance supervisor brought me two failed bearings to reorder. The first had no unit identification number, only a printed manufacturers logo. The second unit had only half of the identification sticker remaining. In both cases I was unable to determine the reorder part number, and in the second example I can only guess where the other half of the sticker wound up.... I hope not in our finished product".

**Solution:** When you buy a product that works identification is important. We developed a unique permanent surface marking process and will incorporate it on all of our CRES products. No paper or plastic "fly away" stickers. No "disappearing" ink. The brand and part description will be there when it comes time to reorder.



CRES Units



## *"One bearing just won't do!"*

**Problem:** "This bearing is OK for this particular application, but different areas of my plant demand different degrees of performance. A "One Size Fits All" corrosion resistant bearing is overkill in some areas and I am paying too much. In my toughest applications, this product is unacceptable. I need something better! When will the bearing companies learn I need the flexibility of a broad range of products to

make the correct choice for each and every area of my plant. I am still looking for a solution where I have a zero tolerance for rust".



Competitor  
"One Size Fits All" Unit



**Solution:** The most important feature we offer is not in any individual product. What you get from the EPT combination of Sealmaster and Browning is a complete line of Corrosion Resistant Engineered Solutions (CRES). This means Superior Technology, Engineering Excellence, and High Quality Manufacturing. Products specifically developed for the broad range of applications where corrosion resistance is a must.



TDC GOLD



CR GOLD



BEV GOLD



SLIC MOUNT



CRES cv



CRES cs



CRES ss



# ...and

*Healthy  
Peace  
of Mind*

For years, you've **SUFFERED** the consequences of using "standard bearings" in your "non standard" production environment...

You've been **FORCED** to pay the price of premature bearing failure, lost production time, and costly unscheduled repair...

You've endured the **AGONY** of trying one bearing after another provided by companies operating under the "one size fits all" philosophy...

## YOUR SEARCH IS OVER...



Emerson Power Transmission is pleased to introduce CRES Mounted Ball Bearings. Seven distinctive product lines designed to meet the widest range of plant applications.

### CRES CV



Housing: Composite  
Insert: Browning® V Insert

End Cap: Available  
Shield: Available

#### Housing Styles

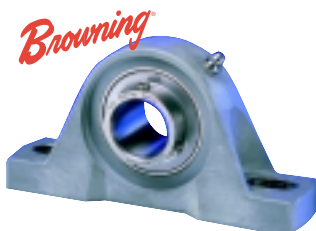
Pillow Block  
2 Bolt Flange  
4 Bolt Flange  
Tapped Base

#### Bore Sizes

3/4"	1 1/4"
1"	1 7/16"
1 3/16"	1 1/2"
1 1/4S"	

See Flyer CRES CV-00 or visit [www.emerson-ept.com](http://www.emerson-ept.com) for more information.

### CRES CS



#### Housing Styles

Pillow Block  
2 Bolt Flange  
4 Bolt Flange  
Tapped Base

#### Bore Sizes

3/4"	1 1/4"
1"	1 7/16"
1 3/16"	1 1/2"
1 1/4S"	

See Flyer CRES CS-00 or visit [www.emerson-ept.com](http://www.emerson-ept.com) for more information.

### CRES SS



Housing: 300 Series Stainless Steel  
Insert: 400 Series Stainless Steel

End Cap: Not Available  
Shield: Not Available

#### Housing Styles

Pillow Block  
2 Bolt Flange  
4 Bolt Flange  
Insert

#### Bore Sizes

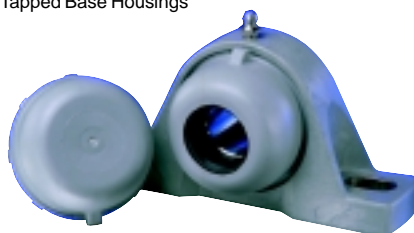
3/4"	1 1/4"
1"	1 7/16"
1 3/16"	1 1/2"
1 1/4S"	

See Flyer CRES SS-00 or visit [www.emerson-ept.com](http://www.emerson-ept.com) for more information.

## ACCESSORIES

### End Cap

- Available in Open & Closed Configurations
- Easy Installation and Removal
- Advanced Sealing Features
- Can be Installed on Front & Back Side of:
  - Pillow Block Housings
  - Tapped Base Housings



### Backside Shield



## TDC GOLD



**SEALMASTER**

**Housing:** Composite  
**Insert:** TDC Coated Insert

**End Cap:** Available  
**Shield:** Available

### Housing Styles

Pillow Block  
2 Bolt Flange  
4 Bolt Flange  
Tapped Base

### Bore Sizes

3/4"	1 1/4"
1"	1 7/16"
1 3/16"	1 1/2"
1 1/4R"	

See Flyer TDC-00 or visit [www.emerson-ept.com](http://www.emerson-ept.com) for more information.

## CR GOLD



**SEALMASTER**

**Housing:** 316 Series Stainless Steel  
**Insert:** Black Oxide Coated Insert

**End Cap:** Available  
**Shield:** Available

### Housing Styles

Pillow Block  
2 Bolt Flange\*  
4 Bolt Flange  
Flange Bracket\*

\*Consult Factory For Complete Offering

### Bore Sizes

3/4"	1 1/4"	1 15/16"
1"	1 7/16"	2"
1 3/16"	1 1/2"	2 3/16"
1 1/4R"	1 11/16"	2 7/16"

See Flyer CRG-00 or visit [www.emerson-ept.com](http://www.emerson-ept.com) for more information.

## BEV GOLD



**SEALMASTER**

**Housing:** 316 Series Stainless Steel  
**Insert:** TDC Coated Insert

**End Cap:** Available  
**Shield:** Available

### Housing Styles

Pillow Block  
2 Bolt Flange\*  
4 Bolt Flange  
Flange Bracket\*

\*Consult Factory For Complete Offering

### Bore Sizes

3/4"	1 1/4"	1 15/16"
1"	1 7/16"	2"
1 3/16"	1 1/2"	2 3/16"
1 1/4R"	1 11/16"	2 7/16"

See Flyer BEV-00 or visit [www.emerson-ept.com](http://www.emerson-ept.com) for more information.

## SLIC MOUNT



**SEALMASTER**

**Housing:** Composite  
**Insert:** SLIC Insert

**End Cap:** Available  
**Shield:** Available

### Housing Styles

Pillow Block  
2 Bolt Flange  
4 Bolt Flange  
Tapped Base

### Bore Sizes

3/4"	1 1/4"
1"	1 7/16"
1 3/16"	1 1/2"
1 1/4R"	

See Flyer SLIC-00 or visit [www.emerson-ept.com](http://www.emerson-ept.com) for more information.

Also Look For...

**SEALMASTER**

ERX-T CR



The Original  
Concentric Locking,  
Corrosion Resistant Insert

See Catalog ERX-98 For More Information

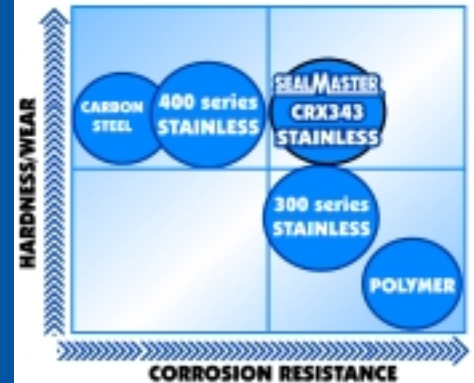
Coming Soon...

**SEALMASTER**



## CRX-TREME

The Ultimate in  
Corrosion Resistant  
Technology



The EPT CRES package includes unique products which solve problems in unique applications. The ultimate design, Sealmaster® Patented CRX-343, combines the properties of 300 Series Stainless Steel with the load capacity of standard bearing steel for an unmatched combination of corrosion resistance and durability. Sealmaster®, "The Problem Solver", strikes again.

In the near future, EPT will be conducting a nationwide testing program featuring the new CRX Mounted Ball Bearing. If you feel you have a tough application which demands the best in corrosion resistance and overall bearing performance, contact our Technical Customer Service Department at 1-630-898-9620 for more information.

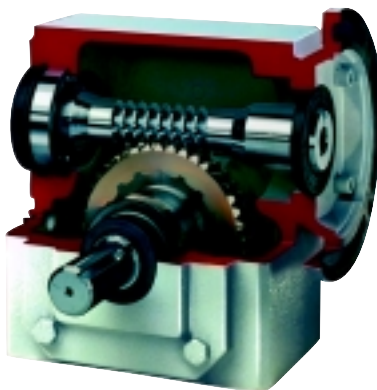
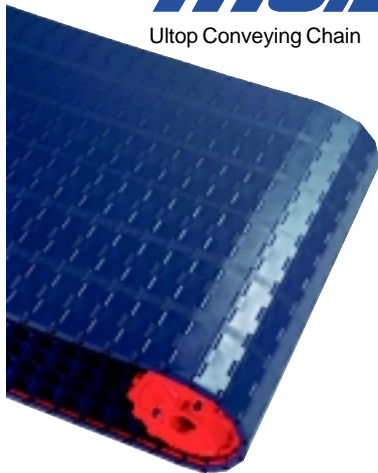
- Extensive Product Information
- Interactive Product Selection Database
- Product Interchange Database

- General Engineering Information
- Up to the minute CRES News and Information

## EPT CRES Products

**MORSE**

Ultop Conveying Chain



**MORSE**

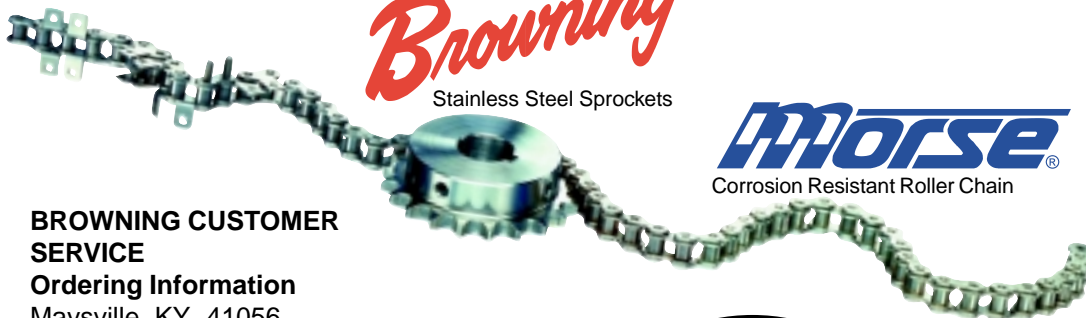
Washdown Speed Reducers

**SEALMASTER**



**Browning**

Stainless Steel Sprockets



**MORSE**

Corrosion Resistant Roller Chain

### BROWNING CUSTOMER SERVICE

#### Ordering Information

Maysville, KY 41056

606-564-2011

1-800-626-2120

### SEALMASTER CUSTOMER SERVICE

#### Ordering Information

Florence, KY 41022

606-342-7900

1-800-354-9825

### SEALMASTER & BROWNING Technical Customer Service

Aurora, IL 60504

630-898-9620



### APPLICATION CONSIDERATIONS

The proper selection and application of power transmission products and components, including the related area of product safety, is the responsibility of the customer. Operating and performance requirements and potential associated issues will vary appreciably depending upon the use and application of such products and components. The scope of the technical and application information included in this publication is necessarily limited. Unusual operating environments and conditions, lubrication requirements, loading supports, and other factors can materially affect the application and operating results of the products and components and the customer should carefully review its requirements. Any technical advice or review furnished by Emerson Power Transmission Corporation and its divisions with respect to the use of products and components is given in good faith and without charge, and Emerson assumes no obligation or liability for the advice given, or results obtained, all such advice and review being given and accepted at customer's risk.

For a copy of our **Standard Terms and Conditions of Sale, Disclaimers of Warranty, Limitation of Liability and Remedy**, please contact MORSE's customer service, 1-800-354-9825. These terms and conditions of sale, disclaimers and limitations of liability apply to any person who may buy, acquire or use an Emerson Power Transmission Corporation product referred to herein, including any person who buys from a licensed distributor of these branded products.

**EMERSON POWER TRANSMISSION**

620 S. AURORA STREET  
ITHACA NEW YORK 14850

**EMERSON**

SEALMASTER and BROWNING are registered trademarks of Emerson Power Transmission Manufacturing L.P.

© Emerson Power Transmission Manufacturing, L.P. 1999